



ACT
GOVERNMENT



Prevent, Empower, Support

Gambling Harm Awareness Week 2023 Forum

Thursday, 19 October 2023, 8:30am (registration for 9am start) to 12.45pm
Ann Harding Conference Centre, University of Canberra

The Gambling and Racing Commission welcomes you to this Gambling Harm Awareness Week 2023 event to discuss how all stakeholders can 'Prevent, Empower, Support' to address gambling harm in the ACT.

This free forum will identify practical strategies for all stakeholders to play a role in reducing and preventing gambling harm and highlight the evidence behind them.

Program

Registration, networking and refreshments from 8.30am

9:00am	Welcome	Mr Todd Wright Master of Ceremonies
9:05am	Opening Remarks	Ms Leanne Close Deputy Chair, Gambling and Racing Commission
9:15am	Minister's Address	Mr Shane Rattenbury MLA ACT Minister for Gaming
9:25am	Breaking down barriers to help seeking - reflections from my journey Taking the step to seek help for gambling harm can be daunting. People may be experiencing profound feelings of guilt and shame, and be reluctant to open up to others about what they are experiencing. Reflecting on his own journey of recovery, as well as the path of people who he has supported, Markus will explore how we can assist people impacted by gambling harm to take the first step.	Mr Markus Fischer Lead Peer Support & Community Engagement Worker ACT Gambling Support Service
9:45am	Is gaming a gateway for future gambling? Insights for parents, educators and the community There is in behaviour, especially for our young people. Applied cognitive psychologist, A/Professor Sauer, will explore this impact, particularly in relation to future gambling behaviours; with practical insights for people who support young people. Note: Dr Drummond will co-present virtually at this Forum	Associate Professor Jim Sauer and Dr Aaron Drummond School of Psychological Science, University of Tasmania
Networking morning tea - 10.15am		
10:40am	What do people engaging in low risk gambling look like? Evidence to inform prevention strategies at the low end of the gambling harm continuum Compared to moderate risk and problem gambling risk categories, low risk gambling presents a substantially larger group of individuals who are still at risk of experiencing gambling harms. Targeting appropriate public health interventions to individuals engaging in low risk gambling therefore provides an opportunity to efficiently prevent gambling harm at population level. Dr Suomi will discuss new findings on the profiles of individuals engaging in low risk gambling, the harms they experience, and key factors related to transitioning to higher and lower risk gambling over time. These findings can be used to inform a more complete public health strategy for the prevention of gambling harm.	Dr Aino Suomi Director, ANU Centre for Gambling Research

11.10am	<p>Empowering industry staff to engage in difficult conversations with patrons</p> <p>The Vikings Group approached Lifeline Canberra and the Gambling and Racing Commission in 2022 to collaborate on a training program to empower staff within the ACT Club Industry to respond to gambling harm. The Commission funded Lifeline Canberra to work closely with the Vikings Group to establish a pilot program aimed at supporting industry staff to Notice, Interact, Connect and Exit difficult conversations.</p> <p>This joint presentation will discuss the process, the training, the results and what's next.</p>	<p>Joint presentation:</p> <p>Ms Sue-Anne Muggleton Corporate Trainer, Lifeline Canberra</p> <p>Ms Louise Glenn Sports and Community Manager, Vikings Group</p>
11.40am	<p>Introduction by A/Professor Alex Russell.</p> <p>Gambling harm stigma: why it matters, what we know about it and what we can do about it.</p> <p>Panel Discussion: Normalising support and empowering individuals to seek help</p> <p>Facilitated by Master of Ceremonies, Todd Wright</p> <p>There can be considerable public stigma around gambling harm, as well as significant self-stigma. This panel session will draw on the knowledge and experiences of all sectors to consider how we can break down stigma, at the community and individual levels, to empower individuals to speak out and seek help.</p>	<p>Panel members:</p> <p>Dr Devin Bowles Chief Executive Officer, ACT Council of Social Services</p> <p>Mr Markus Fischer Lead Peer Support & Community Engagement Worker, ACT Gambling Support Service</p> <p>Ms Louise Glenn Sports and Community Manager, Vikings Group</p> <p>A/Professor Alex Russell Principal Research Fellow, School of Health, Medical and Applied Sciences, CQUniversity</p>
12.10pm	Q&A	
12.40pm	Wrap up	<p>Ms Leanne Close Deputy Chair, Gambling and Racing Commission</p>

Join us for a light lunch from 12.45pm

About your host and the public health approach to gambling harm prevention

The ACT Gambling and Racing Commission is an independent body established under the *Gambling and Racing Control Act 1999*. The powers, functions and activities of the Commission are set out in the Act.

Gambling is an activity that many people enjoy, yet there are significant social and individual harms that can arise from it. Providing effective gambling harm prevention initiatives in the ACT is pivotal and is a key focus for the Commission. The Commission takes a public health approach to reducing gambling related harm, as outlined in the *Strategy for Gambling Harm Prevention in the ACT - A Public Health Approach (2019-2024)*.

The Commission defines gambling harm as 'Any negative consequence caused or made worse by gambling'. A public health approach recognises that:

1. gambling harm is not just financial impact, it can also have serious social, physical and wellbeing impacts. It can affect relationships, employment, study, culture and health; and
2. gambling harm can be experienced not only by the person gambling but also by people who are close to them and at the community level.

The Commission recognises that the actions and choices of individuals, while important, are deeply embedded in social contexts and processes. This means effective action for reducing harm will include not only actions to influence individuals but also actions to mitigate risks at the societal, community, and interpersonal levels.

From a public health perspective, the responsibility for addressing gambling harm is broad and shared from individuals and community groups to businesses, corporations and governments at all levels. A public health approach therefore promotes the adoption of policies and initiatives to reduce gambling harm across a range of sectors and settings, including government, gambling industry and venues, local communities, and gambling and other health and wellbeing support services.

Adopting a public health approach means everyone involved needs to recognise they have a particular role in supporting an integrated and comprehensive strategy.

Invited Speakers

Ms Leanne Close **Deputy Chair, Gambling and Racing Commission**

Leanne joined the Commission Board in October 2021, following prior experience including head of the Australian Strategic Policy Institute's Counter-terrorism Program and Deputy Commissioner of National Security at the Australian Federal Police (AFP). She has spent much of her career with the AFP, in a variety of areas including counter-terrorism, protection, aviation operations and human resources. In 2016, Leanne was seconded to the Attorney-General's Department to lead their Criminal Justice Group. From 2015-2019, she was Co-Chair of the Asia-Pacific Group on Money Laundering, the largest Financial Action Task Force (FATF) group in the world. Leanne holds a Master of Education Leadership and two Graduate Certificates in Professional Development Education and Applied Management. Leanne currently sits on various government and not for profit boards and committees, including Australian Volunteers International. She was recently appointed to Chair the Implementation Oversight Committee of the ACT Emergency Services Agency, overseeing the development and delivery of its leadership and cultural change program.



Mr Shane Rattenbury MLA **ACT Minister for Gaming**

Shane Rattenbury is the leader of the ACT Greens and a Minister in the ACT Government. Shane was first elected to the ACT Legislative Assembly in 2008, and has served as Speaker of the Assembly, as a crossbench member, as well as holding various Ministries. He is currently Attorney-General, Minister for Water, Energy and Emissions Reduction, Minister for Gaming and Minister for Consumer Affairs.

Mr Markus Fischer **Lead Peer Support (Lived Experience) & Community Engagement Worker,** **ACT Gambling Support Service**

Markus has worked in the mental health and Alcohol and Other Drug (AOD) sectors for over seven years with the last three primarily with a focus of the impacts of gambling harm in the community. The focus of his work in the community is sharing his lived experience of co-occurrence (gambling, mental health and AOD issues) and their impacts on his life, including how he sought support. Markus provides information, encouragement and pathways for others to reach out for support and assistance when they are negatively impacted by gambling.

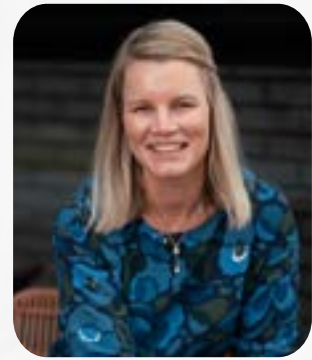


Associate Professor Jim Sauer & **Dr Aaron Drummond** **School of Psychological Science, University of Tasmania**

Jim and Aaron's work looks at the effects of gambling-like in-game reward mechanisms (i.e., loot boxes) on players' cognition and behavior. Since 2018, their lab at the University of Tasmania has published – among other papers on the topic – the first demonstrations that loot boxes meet important psychological (2018) and legal (2020) criteria for gambling, and a meta-analytic demonstration that loot box spending is associated with problem gambling symptomatology (2021). Their work contributed to loot boxes being included in US (ESRB) and European (PEGI) classification descriptors.

Dr Aino Suomi
Director, ANU Centre for Gambling Research

Aino is a public health researcher and a clinically trained psychologist with a specific focus on the study of gambling harm across vulnerable populations using population health methodologies. Her research has made a significant contribution to policy and service provision on child and family wellbeing in the context of gambling harm, family violence, help-seeking for gambling harm and co-morbid mental health conditions. Aino is the Director of the Centre for Gambling Research in the Centre for Social Research and Methods, at the Australian National University.



Ms Sue-Anne Muggleton
Corporate Trainer, Lifeline Canberra

Sue-Anne has had a long history working within Community and Vocational Education and Training (VET) sectors. Predominantly in management positions, her most recent community service roles included Practice Manager New Services, Relationships Australia Canberra and Region, which encompassed overseeing the ACT Gambling Support Service; and previous to that managing a Family Support Service in SENSW. Key areas of interest include the importance of community development and connection, along with the provision of information and support to individuals, teams and communities when, and where they need it, particularly those facing trauma. She draws on career learnings currently as a Corporate Trainer raising funds for Lifeline Canberra.

Ms Louize Glenn
Sports and Community Manager, Vikings Group

Louize has many achievements in the gambling harm reduction space including introducing the initial "lived experience" presentations to the ACT in 2013. Louize was also instrumental in the introduction of the Clubcare Gambling Counselling program in 2003. Louize is currently the Group Gambling Contact Officer for the Vikings Group and has created initiatives such as their Gambling Harm Induction Program and the Ask for Andy help seeking program. Louize describes herself as an advocate for human interaction and breaks in play over business restrictive regulatory change.



Dr Devin Bowles
Chief Executive Officer, ACT Council of Social Services

Devin is an epidemiologist and social scientist. He was appointed CEO of ACTCOSS this year, moving from the Alcohol Tobacco and Other Drug Association of the ACT to take on the role. Devin also recently joined the Gambling and Racing Commission's Advisory Committee. Devin previously led the Council for Academic Public Health Institutions Australasia – the peak body for universities that teach and research public health in Australasia. He has worked in both the Commonwealth and ACT Governments, as well as served on a range of national health and wellbeing boards. With extensive scholarly and other publications, Devin has taught at the Australian National University Medical School and the University of Canberra.

Associate Professor Alex Russell
Principal Research Fellow, School of Health, Medical and Applied Sciences, CQUniversity

Alex Russell is an Associate Professor and Principal Research Fellow at CQUniversity, in the Experimental Gambling Research Laboratory. His research examines how technology is changing gambling, and who is most at risk from any harm from these changes. Research topics include: social influences of gambling, wagering advertising and inducements, gambling-related stigma, the convergence of gambling and gaming, the use of social media by gambling operators, gambling amongst vulnerable populations and many other topics.

