

ACT Gambling and Racing Commission

BUSINESS PLAN

WHAT WE DO



Administer gaming laws in the ACT to control, supervise and regulate gaming

Regulate and approve gaming and racing activities

Monitor and research the social impact of gambling

Alleviate potential gambling harm in the community

Conduct inquiries and investigations into gaming and racing activities

Provide advice to Government

WHO DO WE IMPACT AND WHO ARE OUR STAKEHOLDERS?

ACT community

ACT Government and ACT Legislative Assembly

Territory's licensed gaming and wagering providers and their customers

Other gaming regulators and jurisdictions

OUR VALUES

Fairness and Integrity

Achievement and Excellence

Innovation and Development

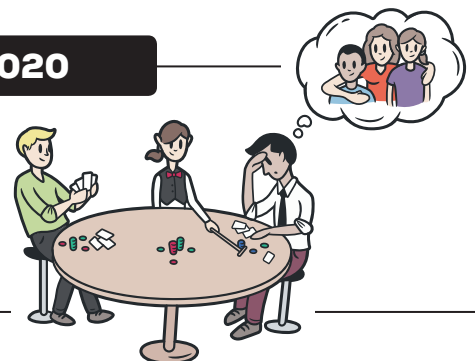
Collaboration and Teamwork

KEY OBJECTIVES FOR 2018 2020

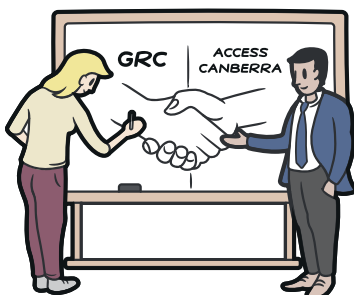
Harm Prevention

Engage, Educate and Enforce

Innovate, Collaborate, and Consult



HOW WILL WE ACHIEVE OUR OBJECTIVES?



SHARING ACCESS CANBERRA RESOURCES

The Gambling and Racing Commission has an MOU with the Chief Minister, Treasury and Economic Development Directorate. This details the services and functions undertaken by Access Canberra on behalf of the Commission in relation to the administration of gaming laws.

HARM PREVENTION

We will implement harm prevention strategies:

- A public health approach to the prevention and minimisation of gambling harm in the Territory Gambling affects the community, not just the individual gambler
- Initiate and complete projects through the Problem Gambling Assistance Fund
 - Applying the latest research and best practice methods for gambling harm prevention
- Support counselling and relapse prevention services



- Target interventions to minimise and prevent harm
- Provide information to help and support people at risk of harm from gambling, including:
 - self-exclusion options
 - gambling harm awareness activities



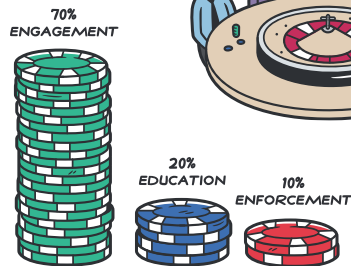
ENGAGE, EDUCATE AND ENFORCE STRATEGY



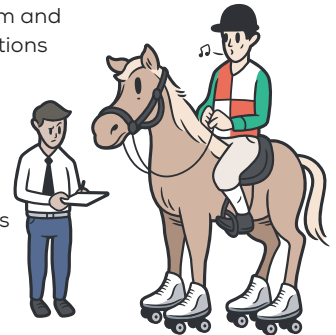
We will increase compliance rates by engaging and educating licensees and the gaming industry.

We will:

- Use a 70/20/10 model
 - 70% engagement
 - 20% education
 - 10% enforcement
- Ensure the industry understands and abides by regulatory obligations



- Safeguard the integrity of the industry
 - Minimise criminal/unethical activity
- Direct resources to where they are needed most
- Using a risk-based approach conduct a comprehensive compliance inspection program
 - Scheduled, random and responsive inspections
- Take action when required
 - More inspections
 - Disciplinary actions
 - Issue directions
 - Prosecutions



INNOVATE, COLLABORATE AND CONSULT

We will collaborate and consult with stakeholders with a commitment to promoting continuous improvement particularly on areas relevant for the ACT Community:

- Community contribution scheme
- Social impact assessment requirements and their availability to the public
- Support the Government by providing independent advice on harm minimisation, consumer protection and gambling and racing regulation

